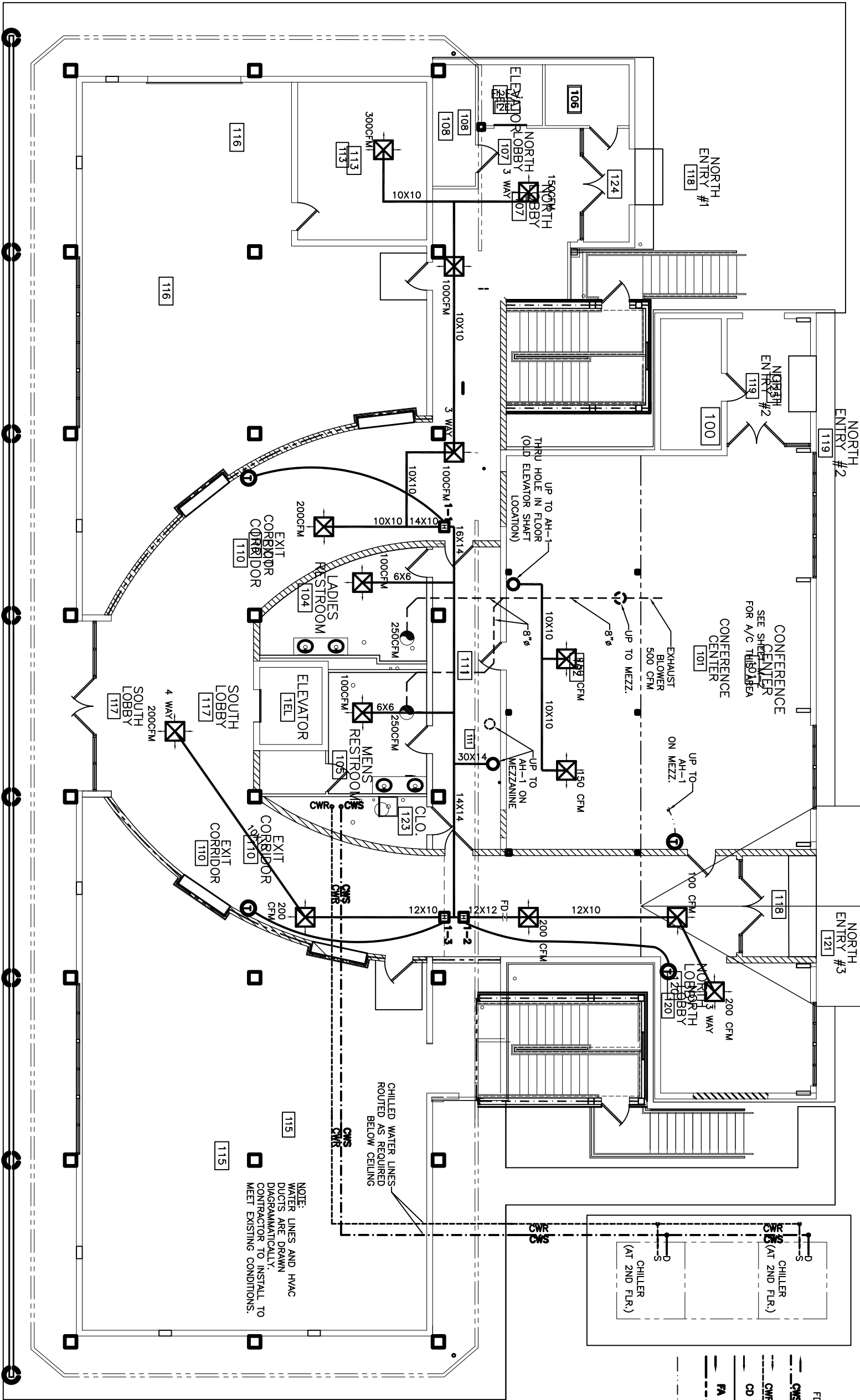


1ST FLOOR HVAC EQUIPMENT - HEATERS					
COOLING MBH			HEATING		
ROOM NO.	HEATER NO.	SEN	LAT	TOTAL CFM	MBH
110 NW	1-1	-	-	-	17
110 NE	1-2	-	-	-	17
110 NE	1-3	-	-	-	17
					5
					N/A

* CARRIER PART NUMBERS OR EQUAL.



NOTES

- SEE DWG. M-9 "CHILLED WATER RISER DIAGRAM" FOR PIPE SIZES.
- SEE DWG. M-11 "OUTSIDE AIR RISER DIAGRAM" FOR DUCT SIZES.
- CONDENSATE LINES MAY BE RUN DIRECTLY TO DRAIN ON SAME FLOOR WHERE SUFFICIENT DROP IS AVAILABLE.
- INSULATE ALL PIPING.
- 5 FT. LONG HVAC FLEX HOSE MAY BE SUBSTITUTED AT DUCT RUN ENDS.

LEGEND

- ELECTRIC DUCT HEATER
- VARIABLE AIR VOLUME DAMPER
- HVAC AIR REGISTER
- 24 X 24, TITUS #TUSA-AA
- EXHAUST BLOWER
- THERMOSTAT
- HVAC FLEX HOSE. NOT TO EXCEED 5' IN LENGTH.
- WALL AIR RETURN
- AUTO SHUT-OFF DAMPER
- FIRE DAMPER
- CHILLED WATER SUPPLY
- CHILLED WATER RETURN
- CONDENSATE DRAIN
- FRESH AIR
- THERMOSTAT WIRE
- RETURN AIR CASSED OPENING IN WALL 32 X 12 (ROOM TO HALL CEILING)

FIRST FLOOR MECHANICAL PLAN
SCALE: 3/16" = 1'-0"

HVAC
REVISED: 11/05/07 ab
REVISED: 06/04/07 ab
REVISED: 05/10/07 ab
REVISED: 05/02/07 ab
REVISED: 04/26/07 ab
REVISED: 03/09/07 ab
REVISED: 02/23/07 dd

CONTRACT SET- 10/10/07

SCALE:AS NOTED
FILE:
JOB NO. 1729
DATE:1-8-07
SHEET
M-1
OF

RENOVATE OFFICE BUILDING

DAMMON ENGINEERING. INC.

1095 FLORIDA AVENUE 985-649-5832 SLIDELL, LA. 70458
DAMMONENGINEERING.COM

1ST FLOOR MECHANICAL PLAN

ST. TAMMANY PARISH ADMIN. COMPLEX
520 OLD SPANISH TRAIL
SLIDELL, LOUISIANA